

**PROJECT PACK  
SCHOOLS**





## What is Culture Quest?

Culture Quest will bring together Dorset cultural organisations and freelancers to deliver inspiring arts and cultural activity for children aged 5 - 11 in Summer 2026.

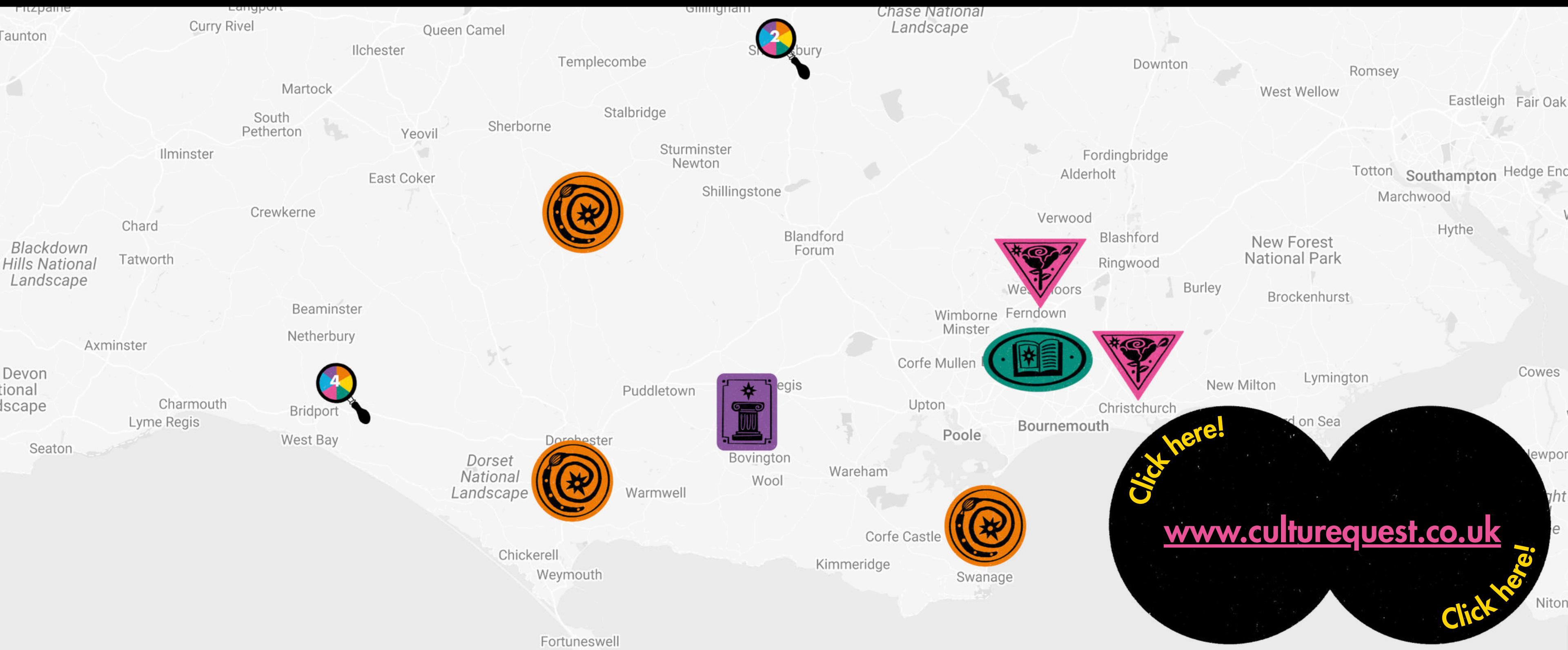
Through a Culture Passport, children will be encouraged to explore Dorset's creative offer trying new activities, discovering new interests and building confidence through first-time experiences.

## What is Culture Quest?

# DIGITAL MAP

We have also created a Digital Map of Dorset's cultural activity for children to support collaboration and cross promotion across the county.

I'm interested in... Everything ▾ Any Age ▾  SEND Friendly

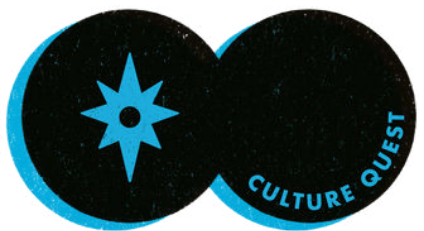


Click here!  
[www.culturequest.co.uk](http://www.culturequest.co.uk)  
Click here!

# HOW IT WORKS



- Children collect a Culture Passport from their local library at the start of the summer holidays.
- They take part in cultural activities across Dorset.
- For each activity, they receive a stamp in their passport.
- To complete the quest, they collect five stamps.
- Completed passports can be returned to libraries to:
  - Receive a certificate.
  - Enter a prize draw to win a yearly pass to a cultural venue of their choice.



# STAMP CATEGORIES

Each venue or activity provider will receive one stamp for children to use in their passports.

Activities fall into the following categories:



Arts & Crafts



Musems & History



Books & Storytelling



Theatre & Performance



Dance & Movement



Music



# HOW SCHOOLS CAN SUPPORT

Schools play an important role in helping to raise awareness of Culture Quest with children and families. You can help by:

- Sharing information about Culture Quest with pupils and families.
- Encouraging participation in summer cultural activities.
- Signposting families to local libraries to collect passports.
- Promoting the prize draw and completion process.

Please note: we are not currently distributing passports through schools ahead of summer, to reduce waste, but may revisit this depending on local interest.

## KEY DATES:

Start: Thursday 23rd July 2026  
End: Friday 28th August 2026



# PASSPORT COMPLETION & PRIZE DRAW



To enter the prize draw, families must:

- Complete 5 stamped activities
- Fill in their details via the Culture Quest website



# BEING CREATIVE AT HOME

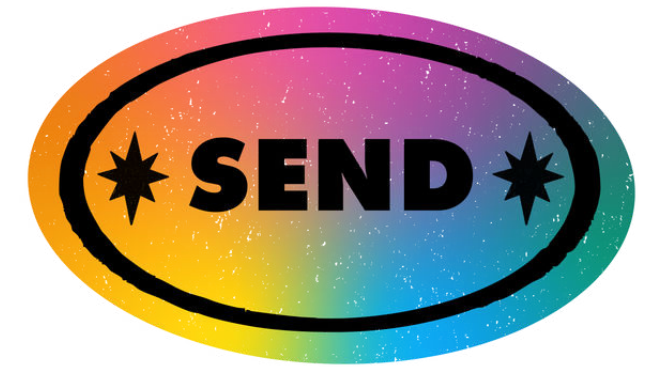
Children can also take part in creative activities at home;

- Libraries will use an “activity at home” stamp.
- Children can write a short description of what they have done.



# INCLUSION

- Families will be able to search for activities on the website by:
  - Location
  - Age
  - SEND (Special Educational Needs and Disabilities) requirements
- Resource packs with creative prompts will be available to support participation at home or in the garden/ park.
- A mix of free and paid activities will be included.
- Some activities have been funded to help ensure a wide and accessible range of opportunities.
- The programme is designed to be inclusive, flexible and accessible for all families

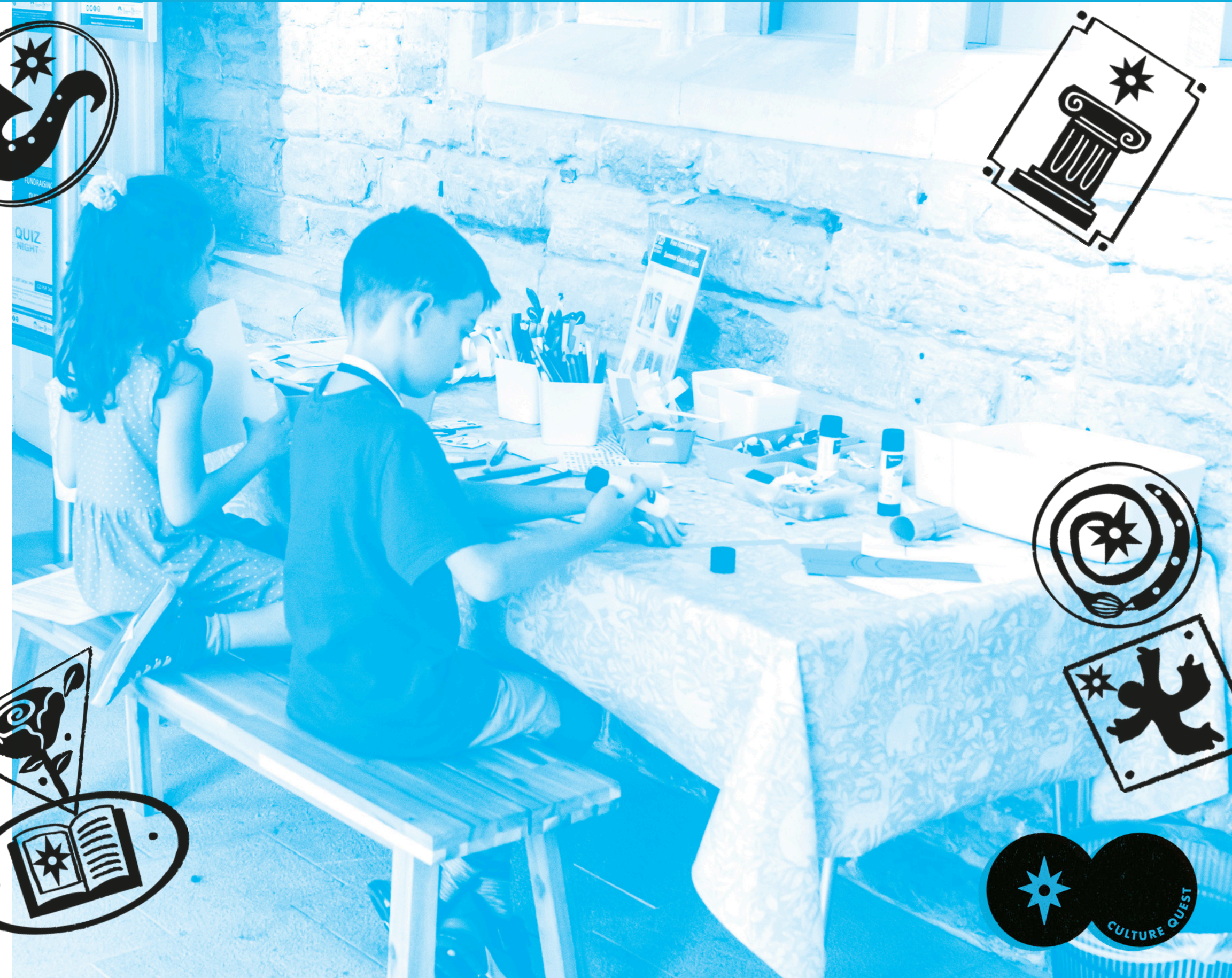
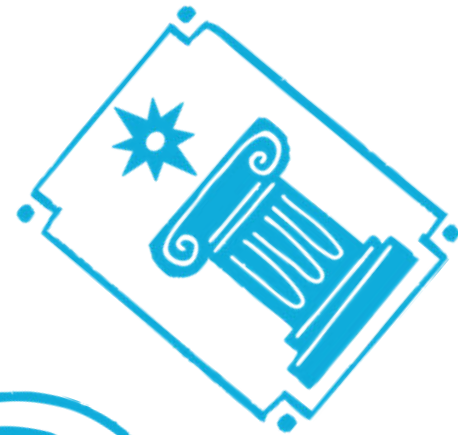


# SPREAD THE WORD

Culture Quest will be promoted through cultural venues and organisations, libraries, and school networks.

We will provide:

- Posters and Flyers [LINK](#)
- Social media assets [LINK](#)



CULTURE QUEST

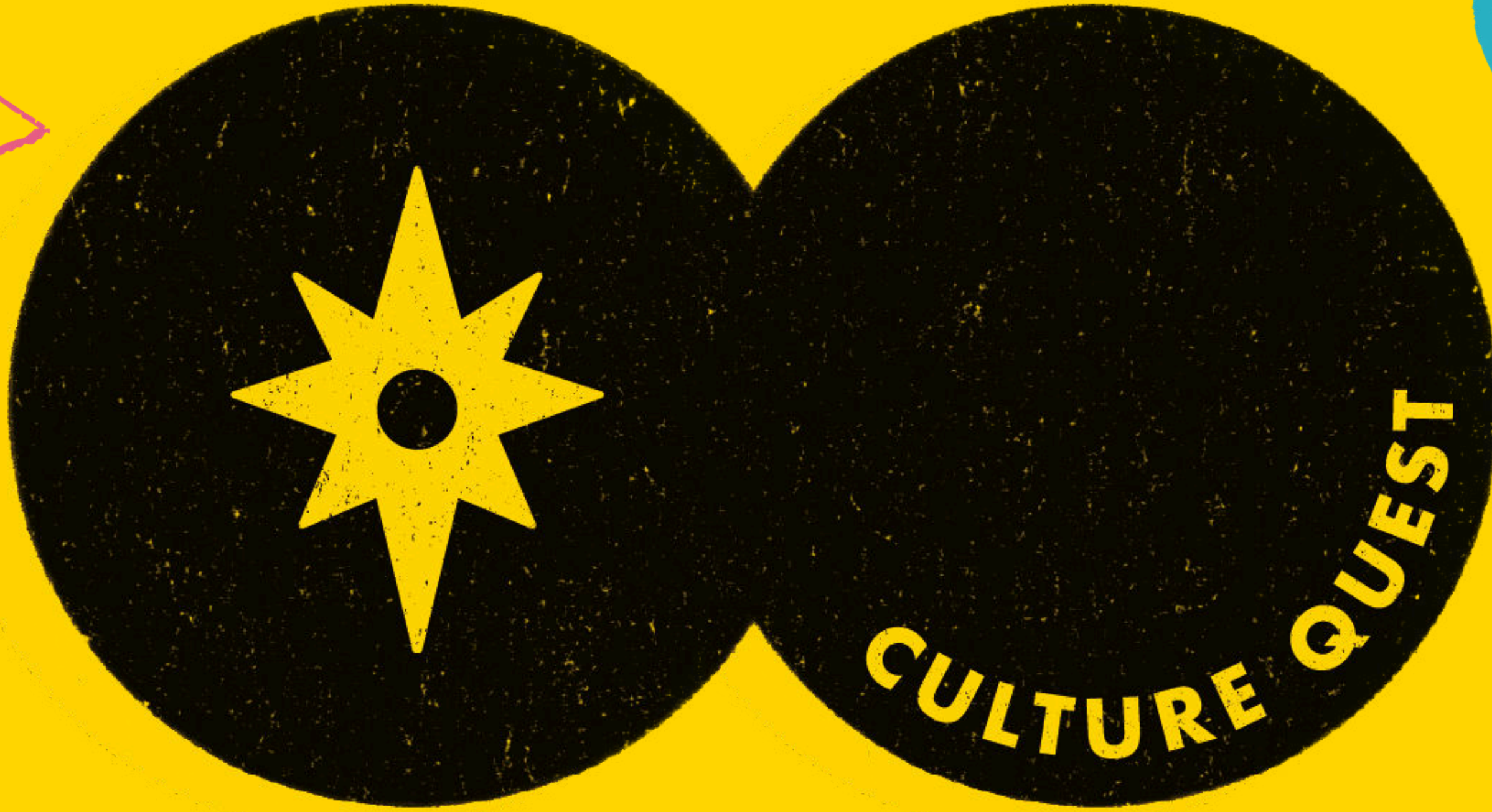


**Contact Us**

If you have any questions or would like to discuss your involvement, get in touch with Sophie and Lucy via email:

[hello@theartsdevelopmentcompany.org.uk](mailto:hello@theartsdevelopmentcompany.org.uk)

**Contact Us**



**THANK YOU!**

